

# Demographics Detail Report

Source: Applied Geographic Solutions (AGS), 2025 A



## Greenfield Plaza

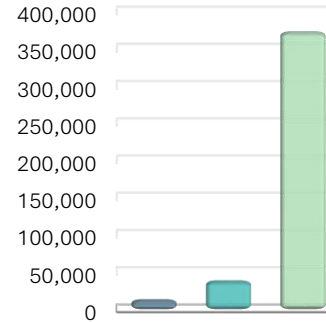
1000 Holly Springs Road | Cary, NC 27531

1 Mile 2 Miles 20 Min Drive

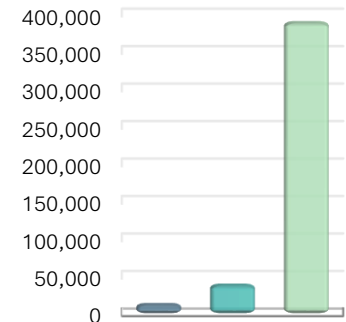
### Population

2025 Population	11,071	---	36,502	---	371,269	---
2030 Projected Population	11,339	---	37,217	---	387,579	---
% Pop Growth	0.5%	---	0.4%	---	0.9%	---
2020 Population	10,842	---	36,272	---	357,010	---
% Change (2020 - 2025)	2.1%	---	0.6%	---	4.0%	---
Population Density	3,585	---	2,897	---	2,330	---
Daytime Population	12,115	---	32,153	---	319,813	---
Average Business Travelers	6	---	28	---	505	---
Average Leisure Travelers	120	---	426	---	4,392	---
Average Migrant Workers	0	---	0	---	0	---
Group Quarters Pop	287	---	368	---	13,571	---
College	0	---	0	---	10,456	---
Military	0	---	0	---	0	---
Other Non-Institutional	213	---	257	---	1,341	---

### Population



### Projected Population



1 Mile

2 Miles

20 Min Drive

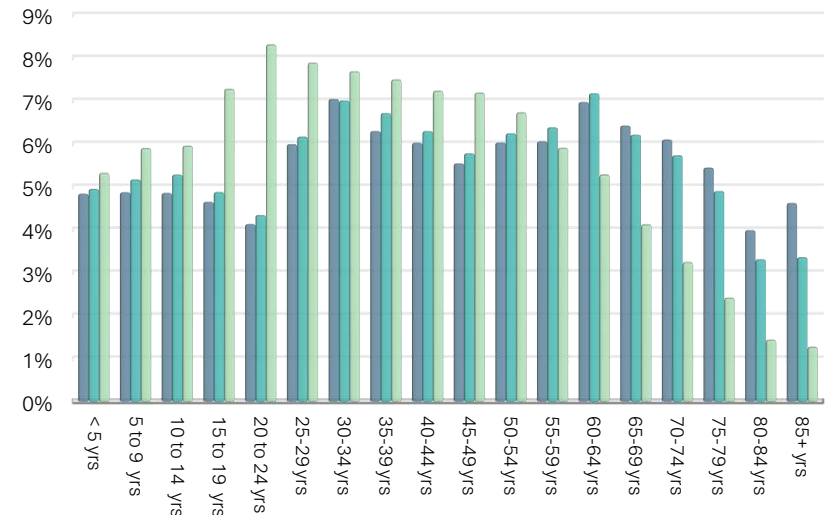
### Total Population by Age

< 5 yrs	535	4.8%	1,805	4.9%	19,711	5.3%
5 to 9 yrs	539	4.9%	1,885	5.2%	21,860	5.9%
10 to 14 yrs	537	4.8%	1,926	5.3%	22,050	5.9%
15 to 19 yrs	514	4.6%	1,778	4.9%	26,971	7.3%
20 to 24 yrs	457	4.1%	1,582	4.3%	30,812	8.3%
25-29 yrs	663	6.0%	2,249	6.2%	29,231	7.9%
30-34 yrs	779	7.0%	2,555	7.0%	28,484	7.7%
35-39 yrs	696	6.3%	2,449	6.7%	27,783	7.5%
40-44 yrs	666	6.0%	2,296	6.3%	26,813	7.2%
45-49 yrs	613	5.5%	2,106	5.8%	26,637	7.2%
50-54 yrs	667	6.0%	2,277	6.2%	24,939	6.7%
55-59 yrs	670	6.1%	2,328	6.4%	21,876	5.9%
60-64 yrs	771	7.0%	2,617	7.2%	19,573	5.3%
65-69 yrs	710	6.4%	2,265	6.2%	15,265	4.1%
70-74 yrs	675	6.1%	2,090	5.7%	12,004	3.2%
75-79 yrs	602	5.4%	1,786	4.9%	8,922	2.4%
80-84 yrs	441	4.0%	1,207	3.3%	5,297	1.4%
85+ yrs	511	4.6%	1,224	3.4%	4,676	1.3%

### Median Age

46	---	44	---	37	---
----	-----	----	-----	----	-----

### Population by Age



# Demographics Detail Report

Source: Applied Geographic Solutions (AGS), 2025 A



## Greenfield Plaza

1000 Holly Springs Road | Cary, NC 27531

1 Mile

2 Miles

20 Min Drive

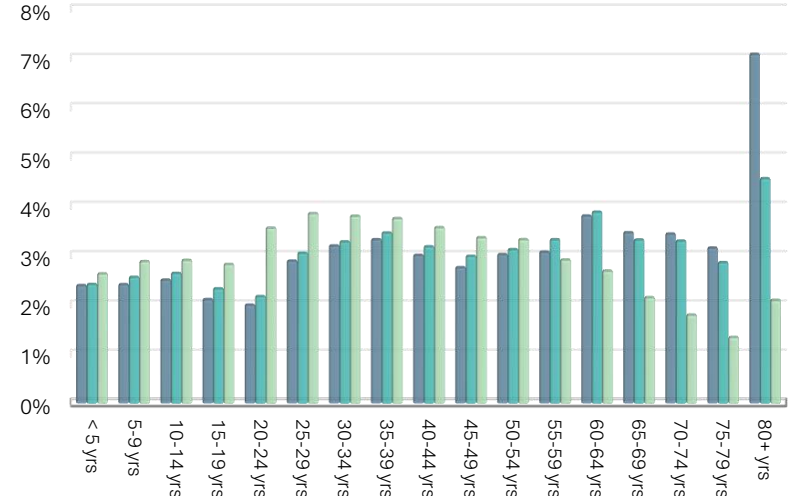
### Female Population by Age

< 5 yrs	264	2.4%	880	2.4%	9,751	2.6%
5-9 yrs	266	2.4%	933	2.6%	10,675	2.9%
10-14 yrs	277	2.5%	962	2.6%	10,769	2.9%
15-19 yrs	233	2.1%	848	2.3%	10,456	2.8%
20-24 yrs	220	2.0%	790	2.2%	13,197	3.6%
25-29 yrs	319	2.9%	1,111	3.0%	14,287	3.8%
30-34 yrs	353	3.2%	1,195	3.3%	14,093	3.8%
35-39 yrs	367	3.3%	1,261	3.5%	13,917	3.7%
40-44 yrs	332	3.0%	1,159	3.2%	13,232	3.6%
45-49 yrs	305	2.8%	1,089	3.0%	12,470	3.4%
50-54 yrs	334	3.0%	1,138	3.1%	12,326	3.3%
55-59 yrs	339	3.1%	1,211	3.3%	10,795	2.9%
60-64 yrs	421	3.8%	1,415	3.9%	9,960	2.7%
65-69 yrs	383	3.5%	1,209	3.3%	7,955	2.1%
70-74 yrs	380	3.4%	1,201	3.3%	6,645	1.8%
75-79 yrs	349	3.1%	1,042	2.9%	4,960	1.3%
80+ yrs	784	7.1%	1,663	4.6%	7,755	2.1%
% of Total Population		53.5%		52.3%		49.4%

### Male Population by Age

< 5 yrs	271	2.4%	925	2.5%	9,961	2.7%
5-9 yrs	272	2.5%	953	2.6%	11,185	3.0%
10-14 yrs	260	2.4%	964	2.6%	11,281	3.0%
15-19 yrs	281	2.5%	931	2.5%	16,516	4.4%
20-24 yrs	236	2.1%	792	2.2%	17,615	4.7%
25-29 yrs	343	3.1%	1,137	3.1%	14,944	4.0%
30-34 yrs	425	3.8%	1,360	3.7%	14,391	3.9%
35-39 yrs	329	3.0%	1,188	3.3%	13,866	3.7%
40-44 yrs	334	3.0%	1,137	3.1%	13,580	3.7%
45-49 yrs	335	3.0%	1,092	3.0%	12,532	3.4%
50-54 yrs	333	3.0%	1,139	3.1%	12,613	3.4%
55-59 yrs	330	3.0%	1,117	3.1%	11,081	3.0%
60-64 yrs	351	3.2%	1,202	3.3%	9,613	2.6%
65-69 yrs	327	3.0%	1,056	2.9%	7,310	2.0%
70-74 yrs	294	2.7%	889	2.4%	5,359	1.4%
75-79 yrs	254	2.3%	745	2.0%	3,962	1.1%
80+ yrs	732	6.6%	1,320	3.6%	5,971	1.6%
% of Total Population		51.6%		49.2%		51.7%

### Female Population

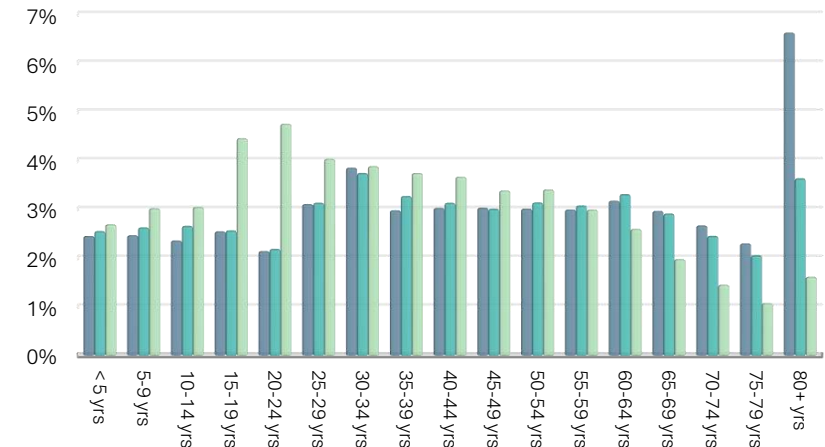


1 Mile

2 Miles

20 Min Drive

### Male Population



# Demographics Detail Report

Source: Applied Geographic Solutions (AGS), 2025 A



Greenfield Plaza

1000 Holly Springs Road | Cary, NC 27531

1 Mile

2 Miles

20 Min Drive

## Population by Race

Am Indian / Alaska Native	38	0.3%	143	0.4%	1,167	0.3%
Asian	783	7.1%	2,895	7.9%	55,269	14.9%
Black	1,271	11.5%	3,837	10.5%	47,765	12.9%
Hawaiian / Pacific Is	2	0.0%	12	0.0%	169	0.0%
White, Non-Hispanic	7,764	70.1%	25,742	70.5%	232,954	62.7%
Other Race	555	5.0%	1,803	4.9%	15,087	4.1%
Multirace	781	7.1%	2,521	6.9%	24,013	6.5%

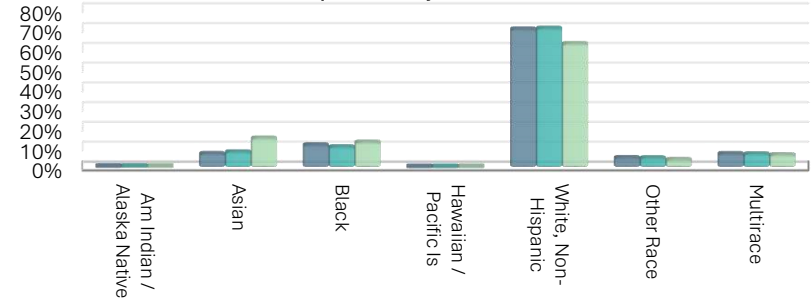
## Population by Ethnicity

Am Ind / Ak Nat, Non-Hispanic	11	0.1%	43	0.1%	477	0.1%
Asian, Non-Hispanic	885	8.0%	3,171	8.7%	57,534	15.5%
Black, Non-Hispanic	1,366	12.3%	4,206	11.5%	51,464	13.9%
HI / Pac Is, Non-Hispanic	2	0.0%	9	0.0%	106	0.0%
White, Non-Hispanic	7,377	66.6%	24,250	66.4%	227,846	61.4%
Other, Non-Hispanic	10	0.1%	67	0.2%	695	0.2%
Multiple, Non-Hispanic	273	2.5%	945	2.6%	10,207	2.7%
Hispanic	1,269	11.5%	3,999	11.0%	33,468	9.0%
Am Indian / Alaska Native	27	2%	100	2%	690	2%
Asian	7	1%	20	0%	162	0%
Black	42	3%	135	3%	1,550	5%
Hawaiian / Pacific Is	0	0%	3	0%	63	0%
White	286	23%	956	24%	8,586	26%
Other	545	43%	1,735	43%	14,392	43%
Multiple	508	40%	1,576	39%	13,806	41%

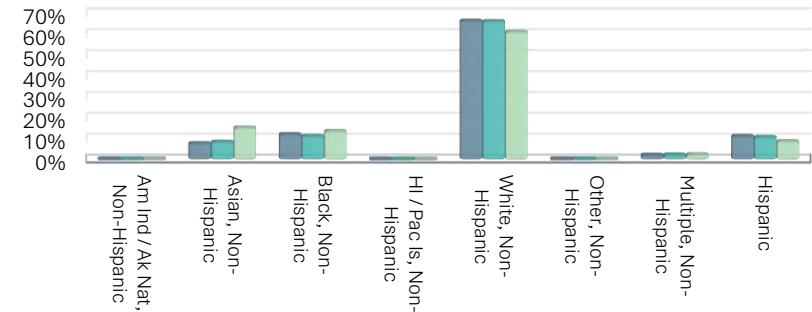
## Language at Home

Spanish Linguistically Isolated	91	0.8%	264	0.7%	2,049	0.6%
Spanish Not Isolated	251	2.3%	1,044	2.9%	8,367	2.3%
Asian Linguistically Isolated	23	0.2%	126	0.3%	1,963	0.5%
Asian Not isolated	124	1.1%	640	1.8%	7,986	2.2%

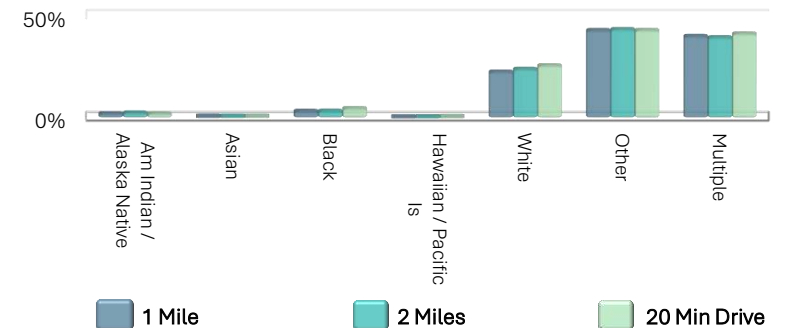
## Population by Race



## Population by Ethnicity



## Population by Hispanic Ethnicity



# Demographics Detail Report

Source: Applied Geographic Solutions (AGS), 2025 A



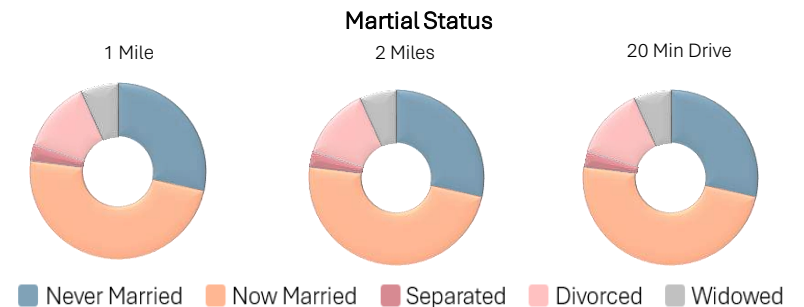
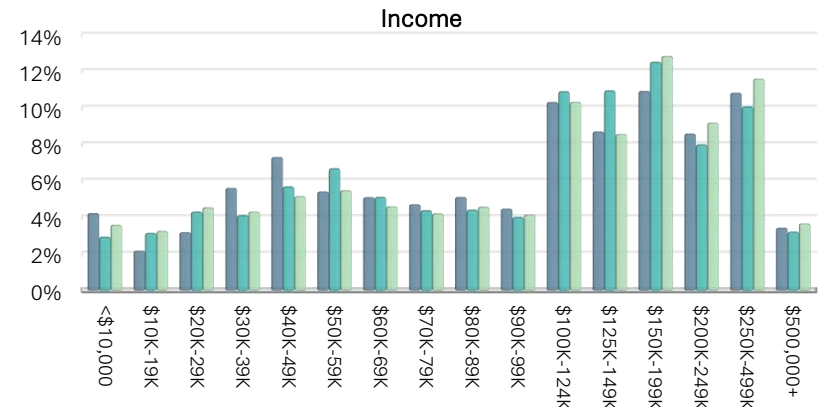
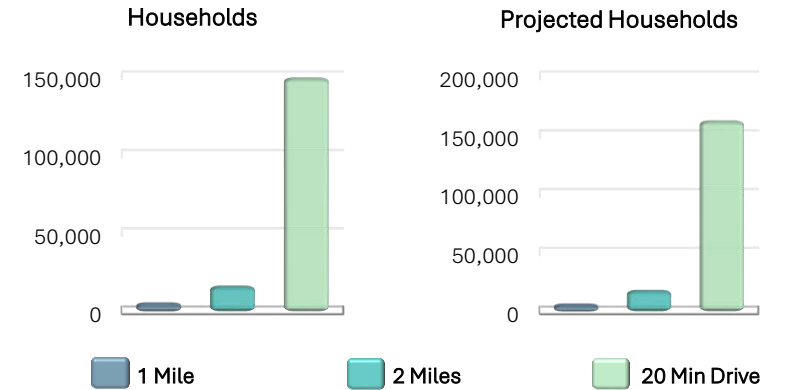
## Greenfield Plaza

1000 Holly Springs Road | Cary, NC 27531

	1 Mile		2 Miles		20 Min Drive	
Households						
2025 Households	4,568	---	15,392	---	148,348	---
2030 Projected Households	5,099	---	16,901	---	161,145	---
% Projected Change	2.3%	---	2.0%	---	1.7%	---
2020 Households	4,661	---	15,313	---	137,596	---
% Change (2020 - 2025)	-0.1%	---	0.0%	---	0.5%	---
Average Household Size	2	---	2	---	2	---
Average Family Size	3	---	3	---	3	---
Average Non-Family HH Size	1	---	1	---	1	---

<b>Income</b>						
Per Capita Income	\$67,571	---	\$66,913	---	\$64,794	---
Average Household Income	\$152,550	---	\$150,097	---	\$158,820	---
Median Household Income	\$116,314	---	\$119,362	---	\$122,307	---
<\$10,000	206	4.2%	472	2.9%	5,414	3.6%
\$10K-19K	105	2.2%	506	3.1%	4,900	3.2%
\$20K-29K	155	3.2%	695	4.3%	6,855	4.5%
\$30K-39K	273	5.6%	663	4.1%	6,499	4.3%
\$40K-49K	356	7.3%	919	5.7%	7,779	5.2%
\$50K-59K	264	5.4%	1,081	6.7%	8,269	5.5%
\$60K-69K	249	5.1%	826	5.1%	6,942	4.6%
\$70K-79K	230	4.7%	708	4.4%	6,354	4.2%
\$80K-89K	249	5.1%	713	4.4%	6,911	4.6%
\$90K-99K	218	4.5%	647	4.0%	6,263	4.1%
\$100K-124K	503	10.3%	1,767	10.9%	15,579	10.3%
\$125K-149K	425	8.7%	1,775	10.9%	12,926	8.6%
\$150K-199K	533	10.9%	2,030	12.5%	19,380	12.8%
\$200K-249K	419	8.6%	1,294	8.0%	13,863	9.2%
\$250K-499K	528	10.8%	1,632	10.0%	17,500	11.6%
\$500,000+	167	3.4%	517	3.2%	5,521	3.7%

<b>Marital Status</b>						
Never Married	2,699	28.5%	8,345	27.0%	111,332	36.2%
Now Married	4,580	48.4%	16,170	52.4%	150,880	49.0%
Separated	276	2.9%	1,108	3.6%	10,615	3.5%
Divorced	1,261	13.3%	3,334	10.8%	24,363	7.9%
Widowed	644	6.8%	1,928	6.2%	10,458	3.4%



# Demographics Detail Report

Source: Applied Geographic Solutions (AGS), 2025 A



## Greenfield Plaza

1000 Holly Springs Road | Cary, NC 27531

1 Mile

2 Miles

20 Min Drive

### Family Structure

Family Households	2,555	34.5%	8,584	34.5%	89,322	37.1%
Non-Family Households	2,327	31.4%	7,662	30.8%	61,635	25.6%
Married with children	866	33.9%	3,027	35.3%	36,272	40.6%
Married no children	1,101	43.1%	3,771	43.9%	34,532	38.7%
Single Parent - Male	68	2.7%	279	3.3%	3,414	3.8%
Single Parent - Female	192	7.5%	614	7.1%	7,133	8.0%
Single - Male	79	3.1%	286	3.3%	2,721	3.0%
Single - Female	210	8.2%	654	7.6%	5,893	6.6%

### Vital Statistics

Births	121	---	416	---	5,022	---
Deaths	108	---	325	---	2,119	---

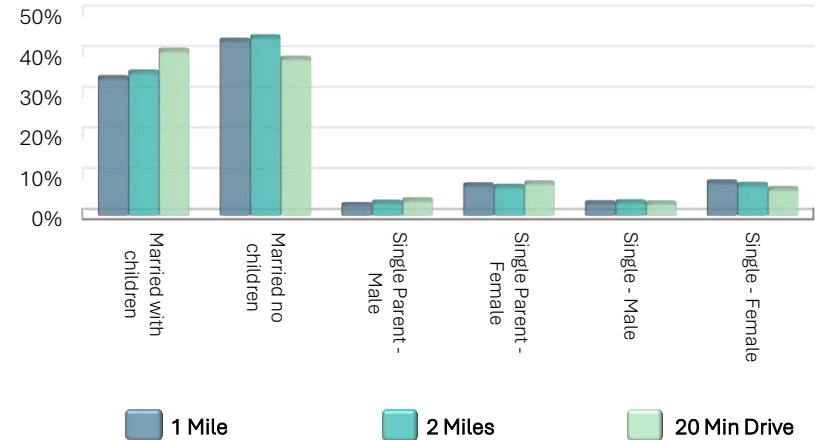
### Household Size

1 Person	2,009	41.2%	6,439	39.6%	46,278	30.7%
2 Persons	1,308	26.8%	4,550	28.0%	50,492	33.4%
3 Persons	669	13.7%	2,229	13.7%	22,568	14.9%
4 Persons	589	12.1%	1,954	12.0%	21,264	14.1%
5 Persons	199	4.1%	701	4.3%	6,922	4.6%
6 Persons	82	1.7%	265	1.6%	2,399	1.6%
7+ Persons	27	0.6%	107	0.7%	1,035	0.7%

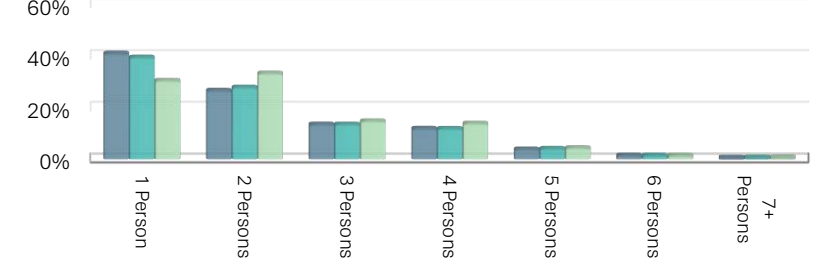
### Housing

Housing Units	5,303	---	17,487	---	162,763	---
Housing Units Vacant	421	7.9%	1,242	7.1%	11,806	7.3%
Housing Units Occupied	4,882	92.1%	16,246	92.9%	150,957	92.7%
Occupied Units Renter	1,708	35.0%	5,908	36.4%	68,224	45.2%
Occupied Units Owner	3,174	65.0%	10,337	63.6%	82,733	54.8%

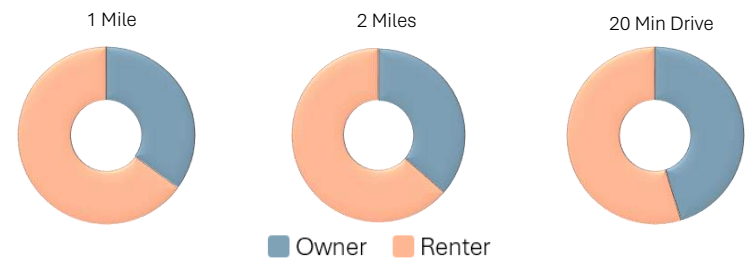
### Family Structure



### Household Size



### Housing Units Occupied



# Demographics Detail Report

Source: Applied Geographic Solutions (AGS), 2025 A



## Greenfield Plaza

1000 Holly Springs Road | Cary, NC 27531

### 1 Mile

### 2 Miles

### 20 Min Drive

#### Vehicles per Household

One Vehicle	1,853	14.4%	5,802	13.2%	51,862	12.0%
Two Vehicles	1,862	14.5%	6,683	15.2%	62,953	14.6%
Three Vehicles	624	4.8%	2,083	4.7%	21,793	5.0%
Four Vehicles	191	1.5%	615	1.4%	5,796	1.3%
Five+ Vehicles	64	0.5%	195	0.4%	1,616	0.4%
No Vehicle	288	2.2%	868	2.0%	6,937	1.6%
Average Vehicles	2	---	2	---	2	---
Median Travel Time to Work	21	---	21	---	21	---

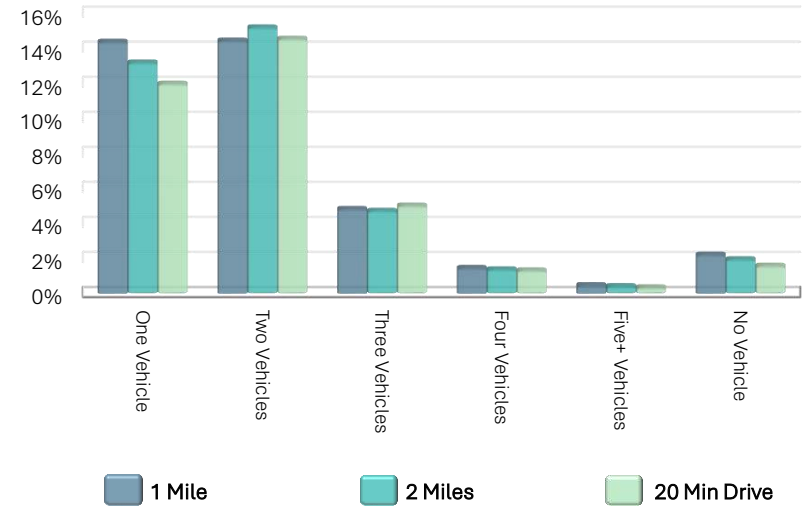
#### Transportation to Work

Drove alone	3,401	84.0%	12,074	85.5%	123,138	85.2%
Carpool	339	8.4%	1,161	8.2%	10,909	7.6%
Public Transportation	180	4.4%	286	2.0%	2,619	1.8%
Motorcycle/Bicycle	25	0.6%	104	0.7%	1,281	0.9%
Walk	66	1.6%	263	1.9%	3,823	2.6%
Other	35	0.9%	239	1.7%	2,697	1.9%

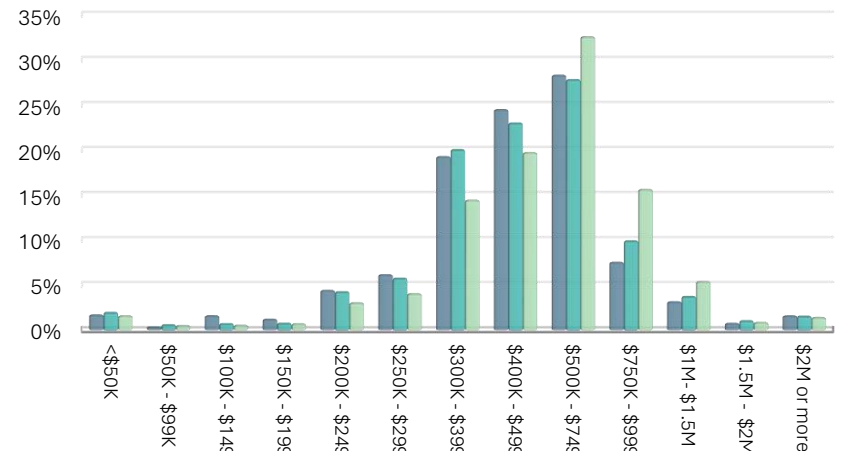
#### Home Value

<\$50K	53	1.7%	191	1.9%	1,279	1.6%
\$50K - \$99K	9	0.3%	52	0.5%	384	0.5%
\$100K - \$149K	50	1.6%	64	0.6%	415	0.5%
\$150K - \$199K	37	1.2%	69	0.7%	550	0.7%
\$200K - \$249K	139	4.4%	426	4.2%	2,461	3.0%
\$250K - \$299K	194	6.1%	579	5.7%	3,293	4.0%
\$300K - \$399K	610	19.2%	2,036	20.0%	11,810	14.4%
\$400K - \$499K	776	24.5%	2,337	22.9%	16,153	19.7%
\$500K - \$749K	897	28.3%	2,829	27.7%	26,700	32.5%
\$750K - \$999K	238	7.5%	1,002	9.8%	12,788	15.6%
\$1M - \$1.5M	99	3.1%	372	3.6%	4,402	5.4%
\$1.5M - \$2M	23	0.7%	97	1.0%	677	0.8%
\$2M or more	49	1.6%	149	1.5%	1,129	1.4%
Median Home Value	\$455,158	---	\$472,612	---	\$538,968	---

#### Vehicles per Household



#### Median Home Value



# Demographics Detail Report

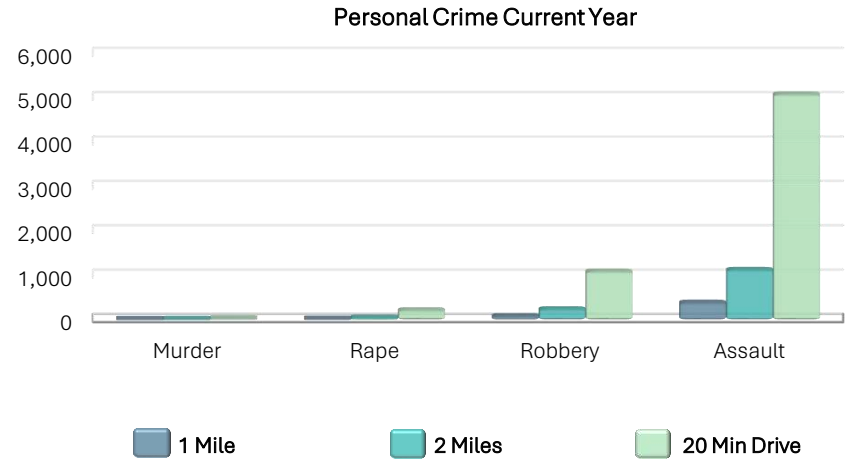
Source: Applied Geographic Solutions (AGS), 2025 A



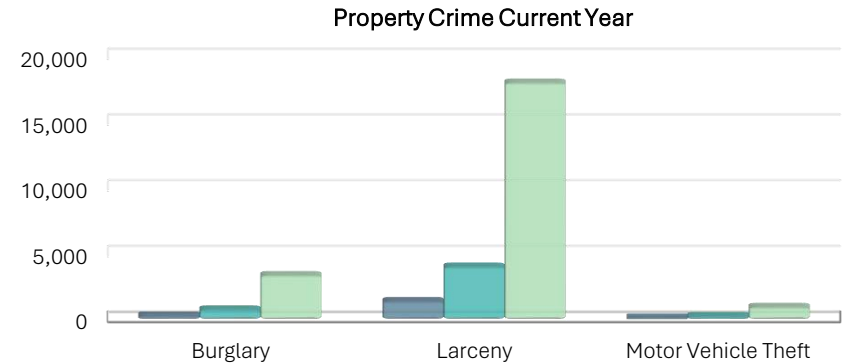
## Greenfield Plaza

1000 Holly Springs Road | Cary, NC 27531

	1 Mile		2 Miles		20 Min Drive	
<b>Total Crime Current Year</b>	2,209	43	6,384	43	28,717	67
<b>Total Crime 5YF Projected</b>	2,218	18	6,410	34	28,834	79
<b>Personal Crime</b>	494	14	1,428	18	6,422	48
Murder	2	5	6	9	26	39
Rape	17	24	49	23	221	37
Robbery	84	15	243	20	1,092	58
Assault	391	12	1,130	16	5,083	46
<b>Personal Crime 5Yr Projected</b>	485	11	1,402	18	6,305	64
Murder	3	8	9	13	39	63
Rape	19	4	55	8	247	57
Robbery	88	39	254	39	1,144	59
Assault	375	5	1,084	15	4,875	66



<b>Property Crime</b>	1,715	49	4,956	48	22,295	71
Burglary	258	43	746	47	3,354	62
Larceny	1,385	43	4,003	43	18,005	67
Motor Vehicle Theft	72	10	208	20	936	59
<b>Property Crime 5Yr Projected</b>	1,733	19	5,008	38	22,529	82
Burglary	256	40	740	51	3,328	77
Larceny	1,404	13	4,058	36	18,252	88
Motor Vehicle Theft	73	28	211	36	949	61



Crime data are index values that are based on 100, with the national average = 100. A value of 50 indicates one-half the national average, and a value of 200 indicates twice the national average.



# Demographics Detail Report

Source: Applied Geographic Solutions (AGS), 2025 A



## Greenfield Plaza

1000 Holly Springs Road | Cary, NC 27531

1 Mile 2 Miles 20 Min Drive

### Public School Enrollment

Nursery / preschool	29	1.5%	196	3.3%	1,843	2.3%
Kindergarten	59	3.1%	146	2.4%	2,566	3.2%
Grades 1-4	370	19.4%	1,433	23.7%	15,241	18.7%
Grades 5-8	533	27.9%	1,278	21.2%	14,500	17.8%
Grades 9-12	390	20.5%	1,509	25.0%	15,997	19.7%
College undergrad	447	23.4%	1,162	19.2%	23,653	29.1%
Grad/Prof school	80	4.2%	311	5.2%	7,527	9.3%

### Private School Enrollment

Nursery / preschool	115	23.3%	327	20.4%	3,878	20.4%
Kindergarten	47	9.4%	107	6.7%	883	4.6%
Grades 1-4	104	21.0%	344	21.5%	3,397	17.9%
Grades 5-8	61	12.3%	312	19.4%	3,280	17.3%
Grades 9-12	67	13.4%	245	15.3%	2,183	11.5%
College undergrad	18	3.6%	125	7.8%	3,374	17.8%
Grad/Prof school	85	17.1%	144	9.0%	2,013	10.6%

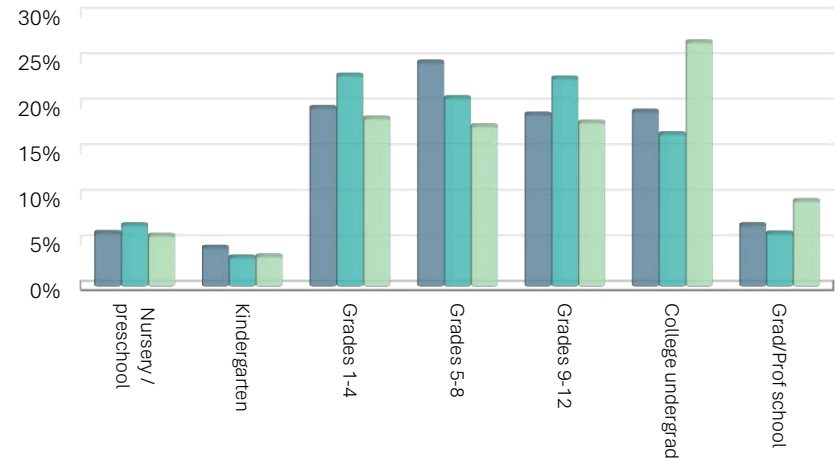
### Total Enrollment

Nursery / preschool	144	6.0%	523	6.9%	5,722	5.7%
Kindergarten	105	4.4%	253	3.3%	3,449	3.4%
Grades 1-4	474	19.7%	1,777	23.3%	18,638	18.6%
Grades 5-8	595	24.7%	1,590	20.8%	17,780	17.7%
Grades 9-12	457	19.0%	1,753	23.0%	18,179	18.1%
College undergrad	465	19.3%	1,286	16.8%	27,027	26.9%
Grad/Prof school	165	6.9%	455	6.0%	9,540	9.5%

### Education Achieved (Pop 25+)

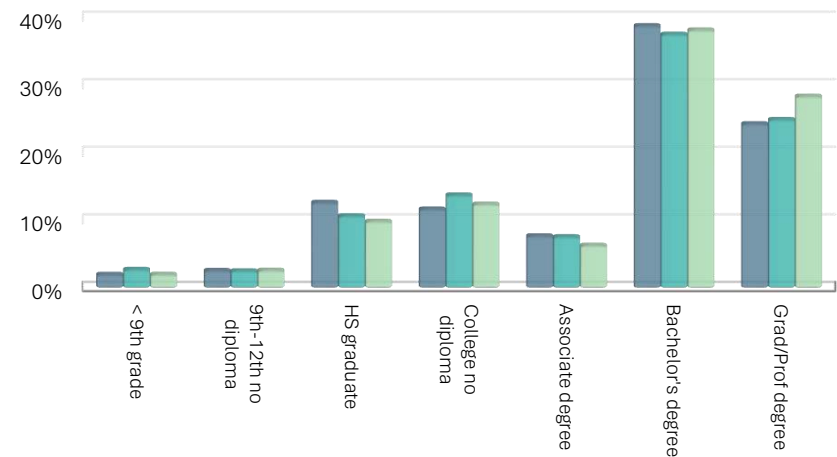
< 9th grade	173	2.0%	763	2.8%	5,119	2.0%
9th-12th no diploma	223	2.6%	706	2.6%	6,610	2.6%
HS graduate	1,078	12.7%	2,946	10.7%	24,730	9.9%
College no diploma	994	11.7%	3,796	13.8%	31,083	12.4%
Associate degree	658	7.7%	2,097	7.6%	15,841	6.3%
Bachelor's degree	3,298	38.8%	10,344	37.6%	95,493	38.2%
Grad/Prof degree	2,066	24.3%	6,872	25.0%	70,990	28.4%

Total School Enrollment



1 Mile 2 Miles 20 Min Drive

Education Achieved (Pop 25+)





# Demographics Detail Report

Source: Applied Geographic Solutions (AGS), 2025 A



## Greenfield Plaza

1000 Holly Springs Road | Cary, NC 27531

1 Mile

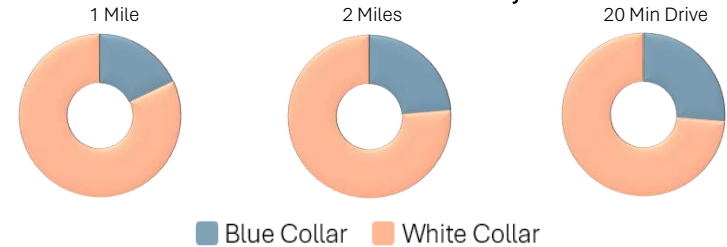
2 Miles

20 Min Drive

### Businesses

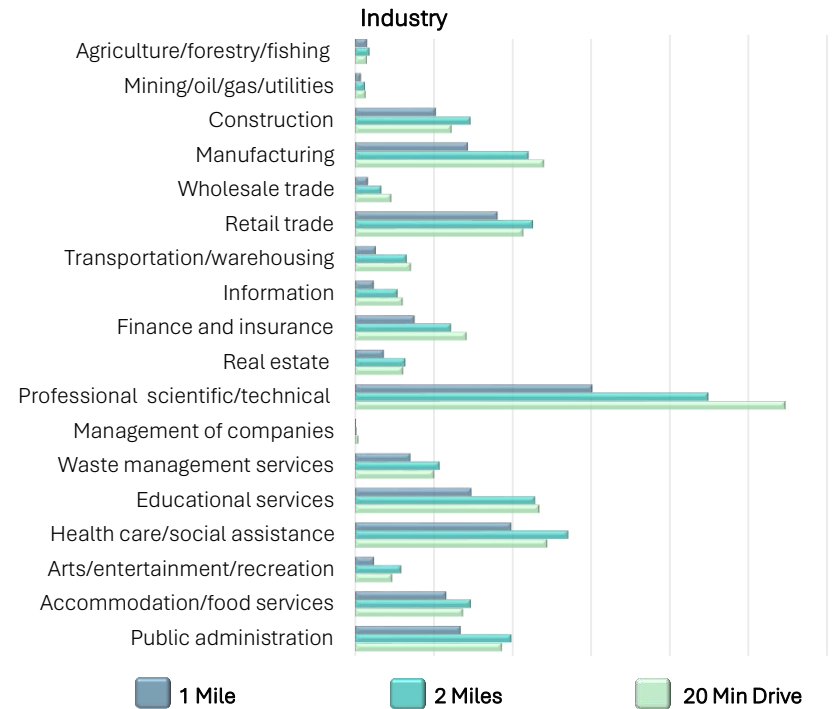
Establishments	1,112	---	2,635	---	19,578	---
Employees (FTEs)	7,046	---	16,407	---	168,087	---
Blue Collar Employees	1,269	18.0%	3,885	24%	44,168	26%
White Collar Employees	5,777	82.0%	12,522	76%	123,919	74%

### Blue Collar/White Collar Employees



### Employees by Industry

Agriculture/forestry/fishing	54	0.8%	152	0.9%	1,261	0.7%
Mining/oil/gas/utilities	26	0.4%	103	0.6%	1,111	0.7%
Construction	362	5.1%	1,202	7.3%	10,309	6.1%
Manufacturing	505	7.2%	1,811	11.0%	20,159	12.0%
Wholesale trade	59	0.8%	273	1.7%	3,837	2.3%
Retail trade	637	9.0%	1,854	11.3%	17,948	10.7%
Transportation/warehousing	94	1.3%	538	3.3%	5,965	3.5%
Information	84	1.2%	441	2.7%	5,075	3.0%
Finance and insurance	266	3.8%	1,002	6.1%	11,919	7.1%
Real estate	128	1.8%	526	3.2%	5,114	3.0%
Professional scientific/technical	1,061	15.1%	3,683	22.4%	45,984	27.4%
Management of companies	3	0.0%	14	0.1%	349	0.2%
Waste management services	247	3.5%	881	5.4%	8,426	5.0%
Educational services	520	7.4%	1,876	11.4%	19,665	11.7%
Health care/social assistance	698	9.9%	2,224	13.6%	20,528	12.2%
Arts/entertainment/recreation	85	1.2%	481	2.9%	3,940	2.3%
Accommodation/food services	408	5.8%	1,207	7.4%	11,532	6.9%
Public administration	472	6.7%	1,628	9.9%	15,685	9.3%



# Demographics Detail Report

Source: Applied Geographic Solutions (AGS), 2025 A



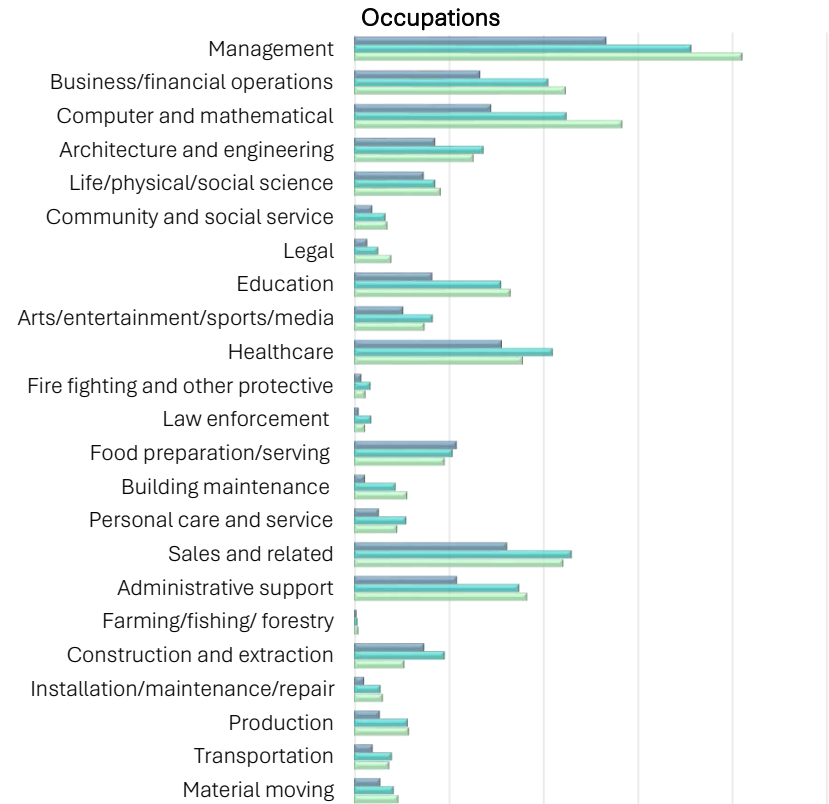
## Greenfield Plaza

1000 Holly Springs Road | Cary, NC 27531

1 Mile 2 Miles 20 Min Drive

### Occupations

Management	938	13.3%	2,921	17.8%	34,489	20.5%
Business/financial operations	469	6.7%	1,683	10.3%	18,794	11.2%
Computer and mathematical	510	7.2%	1,842	11.2%	23,815	14.2%
Architecture and engineering	303	4.3%	1,123	6.8%	10,635	6.3%
Life/physical/social science	260	3.7%	703	4.3%	7,689	4.6%
Community and social service	69	1.0%	273	1.7%	2,959	1.8%
Legal	49	0.7%	210	1.3%	3,310	2.0%
Education	291	4.1%	1,276	7.8%	13,890	8.3%
Arts/entertainment/sports/media	183	2.6%	683	4.2%	6,277	3.7%
Healthcare	550	7.8%	1,723	10.5%	14,985	8.9%
Fire fighting and other protective	28	0.4%	145	0.9%	1,021	0.6%
Law enforcement	18	0.3%	148	0.9%	981	0.6%
Food preparation/serving	382	5.4%	854	5.2%	8,063	4.8%
Building maintenance	42	0.6%	360	2.2%	4,714	2.8%
Personal care and service	92	1.3%	453	2.8%	3,838	2.3%
Sales and related	569	8.1%	1,886	11.5%	18,579	11.1%
Administrative support	383	5.4%	1,432	8.7%	15,377	9.1%
Farming/fishing/ forestry	10	0.1%	29	0.2%	400	0.2%
Construction and extraction	262	3.7%	785	4.8%	4,489	2.7%
Installation/maintenance/repair	38	0.5%	230	1.4%	2,551	1.5%
Production	96	1.4%	467	2.8%	4,872	2.9%
Transportation	70	1.0%	328	2.0%	3,134	1.9%
Material moving	98	1.4%	345	2.1%	3,943	2.3%



Unemployment Rate (2025)	2.1%	---	1.6%	---	2.0%	---
--------------------------	------	-----	------	-----	------	-----

Employment, Pop 16+ (2025)	9,366		30,518		303,154	
Armed Services	7	0.1%	45	0.1%	1,069	0.4%
Civilian	5,909	63.1%	20,382	66.8%	214,932	70.9%
Employed	5,709	96.6%	19,901	336.8%	208,817	#####
Unemployed	200	3.4%	481	8.1%	6,115	103.5%
Not in Labor Force	3,449	36.8%	10,090	33.1%	87,152	28.7%



# Demographics Detail Report

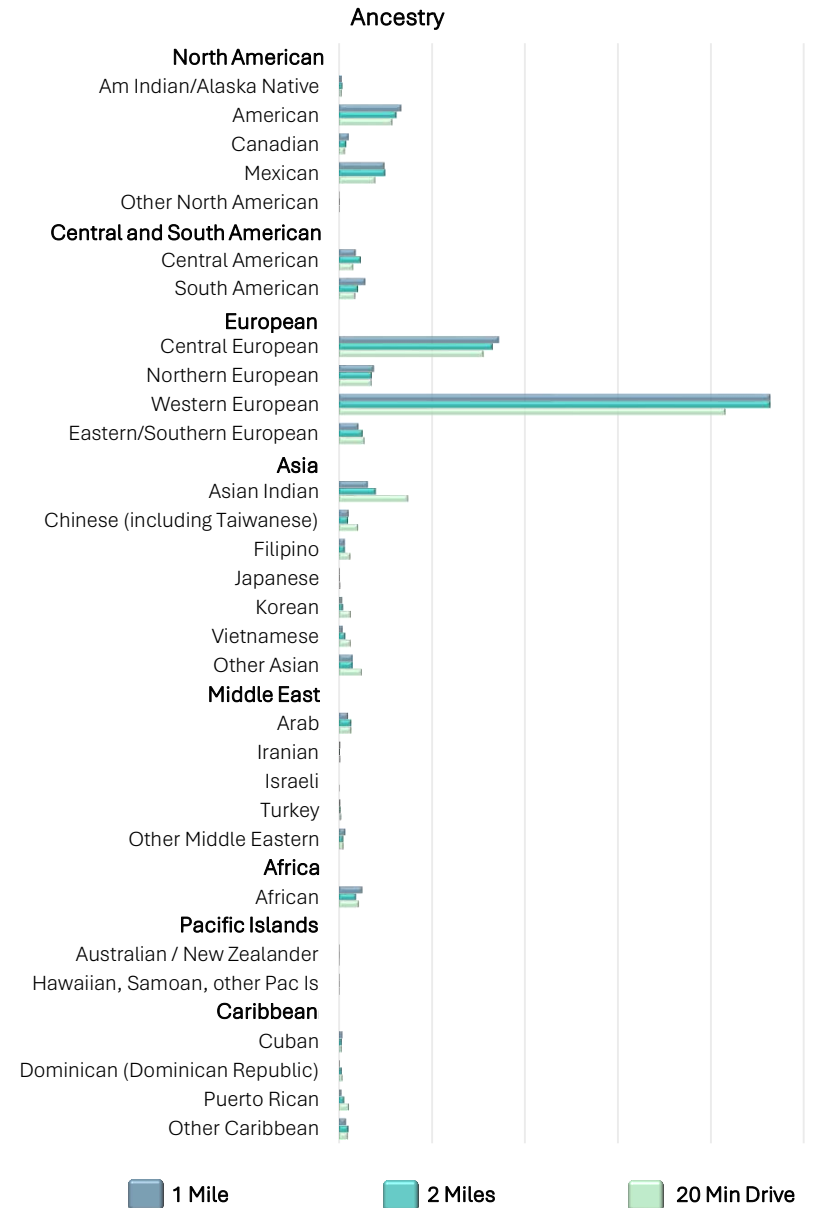
Source: Applied Geographic Solutions (AGS), 2025 A



Greenfield Plaza

1000 Holly Springs Road | Cary, NC 27531

	1 Mile		2 Miles		20 Min Drive	
Ancestry						
North America						
Am Indian/Alaska Native	33	0.3%	127	0.4%	1,016	0.3%
American	745	6.7%	2,175	6.2%	19,971	5.7%
Canadian	116	1.0%	278	0.8%	2,220	0.6%
Mexican	545	4.9%	1,747	5.0%	13,554	3.9%
Other North American	5	0.0%	18	0.1%	172	0.0%
Central and South America						
Central American	198	1.8%	824	2.3%	5,250	1.5%
South American	315	2.8%	726	2.1%	6,115	1.7%
European						
Central European	1,911	17.2%	5,821	16.5%	54,276	15.5%
Northern European	417	3.8%	1,246	3.5%	12,269	3.5%
Western European	5,154	46.4%	16,343	46.4%	145,252	41.6%
Eastern/Southern European	232	2.1%	902	2.6%	9,656	2.8%
Asia						
Asian Indian	345	3.1%	1,390	3.9%	25,941	7.4%
Chinese (including Taiwanese)	118	1.1%	345	1.0%	7,175	2.1%
Filipino	70	0.6%	219	0.6%	4,278	1.2%
Japanese	6	0.1%	24	0.1%	460	0.1%
Korean	37	0.3%	154	0.4%	4,459	1.3%
Vietnamese	42	0.4%	244	0.7%	4,372	1.3%
Other Asian	165	1.5%	520	1.5%	8,584	2.5%
Middle East						
Arab	107	1.0%	460	1.3%	4,628	1.3%
Iranian	13	0.1%	36	0.1%	450	0.1%
Israeli	0	0.0%	0	0.0%	2	0.0%
Turkey	13	0.1%	55	0.2%	752	0.2%
Other Middle Eastern	77	0.7%	164	0.5%	1,695	0.5%
Africa						
African	278	2.5%	643	1.8%	7,388	2.1%
Pacific Islands						
Australian / New Zealander	1	0.0%	3	0.0%	38	0.0%
Hawaiian, Samoan, other Pac Is	1	0.0%	10	0.0%	146	0.0%
Caribbean						
Cuban	40	0.4%	100	0.3%	1,045	0.3%
Dominican (Dominican Republic)	6	0.1%	101	0.3%	1,267	0.4%
Puerto Rican	28	0.3%	201	0.6%	3,749	1.1%
Other Caribbean	85	0.8%	358	1.0%	3,323	1.0%



# Demographics Detail Report

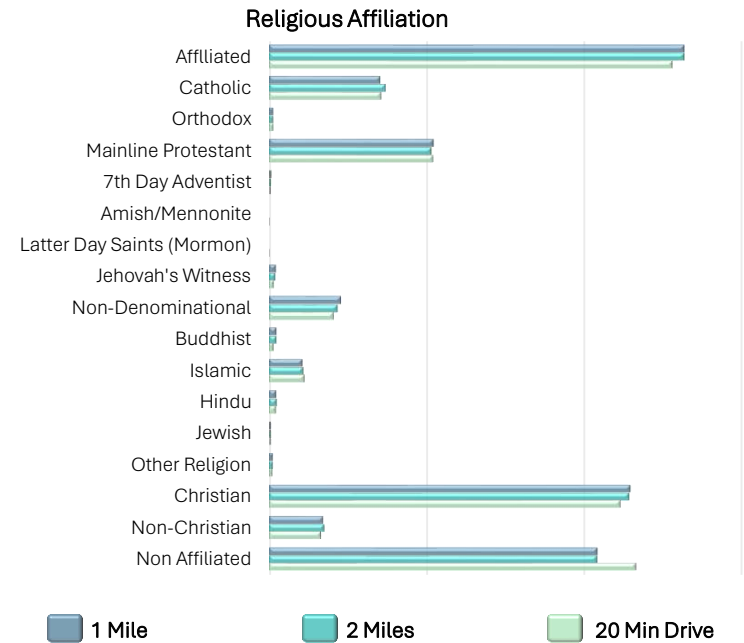
Source: Applied Geographic Solutions (AGS), 2025 A



## Greenfield Plaza

1000 Holly Springs Road | Cary, NC 27531

	1 Mile		2 Miles		20 Min Drive	
<b>Religious Affiliation</b>						
Affiliated	6,180	26.4%	20,390	26.4%	194,375	25.6%
Catholic	1,658	7.1%	5,714	7.4%	54,005	7.1%
Orthodox	61	0.3%	206	0.3%	1,952	0.3%
Mainline Protestant	2,449	10.4%	7,973	10.3%	79,022	10.4%
7th Day Adventist	34	0.1%	104	0.1%	785	0.1%
Amish/Mennonite	0	0.0%	0	0.0%	7	0.0%
Latter Day Saints (Mormon)	0	0.0%	0	0.0%	114	0.0%
Jehovah's Witness	100	0.4%	310	0.4%	2,300	0.3%
Non-Denominational	1,074	4.6%	3,374	4.4%	31,121	4.1%
Buddhist	110	0.5%	364	0.5%	2,122	0.3%
Islamic	497	2.1%	1,676	2.2%	17,166	2.3%
Hindu	108	0.5%	378	0.5%	3,339	0.4%
Jewish	31	0.1%	100	0.1%	920	0.1%
Other Religion	57	0.2%	190	0.2%	1,523	0.2%
Christian	5,377	22.9%	17,681	22.9%	169,305	22.3%
Non-Christian	803	3.4%	2,709	3.5%	25,070	3.3%
Non Affiliated	4,890	20.9%	16,112	20.8%	176,894	23.3%





# Demographics Detail Report

Applied Geographic Solutions (AGS), 2025 A



Greenfield Plaza

1000 Holly Springs Road | Cary, NC 27531

